

CP1220M 12V 1.6Ah(20hr)

The rechargeable batteries are lead-lead dioxide systems. The dilute sulfuric acid electrolyte is absorbed by separators and plates and thus immobilized. Should the battery be accidentally overcharged producing hydrogen and oxygen, special one-way valves allow the gases to escape thus avoiding excessive pressure build-up. Otherwise, the battery is completely sealed and is, therefore, maintenance-free, leak proof and usable in any position.



Battery Construction

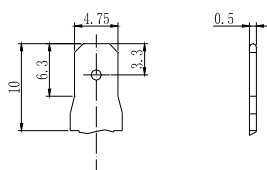
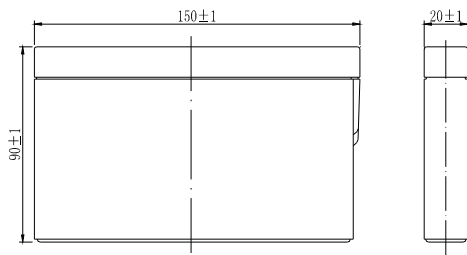
| | | | | | | | | |
|--------------|----------------|----------------|-----------|-------|--------------|----------|------------|---------------|
| Component | Positive plate | Negative plate | Container | Cover | Safety valve | Terminal | Separator | Electrolyte |
| Raw material | Lead dioxide | Lead | ABS | ABS | Rubber | Copper | Fiberglass | Sulfuric acid |

General Features

- Absorbent Glass Mat (AGM) technology for efficient gas recombination of up to 99% and freedom from electrolyte maintenance or water adding.
- Not restricted for air transport-complies with IATA/ICAO Special Provision A67.
- UL-recognized component.
- Can be mounted in any orientation.
- Computer designed lead, calcium tin alloy grid for high power density.
- Long service life, float or cyclic applications.
- Maintenance-free operation.
- Low self discharge.

Dimensions and Weight

Length(mm / inch).....150 / 5.91
 Width(mm / inch).....20 / 0.79
 Height(mm / inch).....90 / 3.54
 Total Height(mm / inch).....90 / 3.54
 Approx. Weight(Kg / lbs).....0.68 / 1.5



Performance Characteristics

Nominal Voltage12V
 Number of cell6
 Design Life 5 years
 Nominal Capacity 77°F(25°C)
 20 hour rate (0.08A, 10.5V)..... 1.6Ah
 10 hour rate (0.15A, 10.5V)..... 1.5Ah
 5 hour rate (0.27A, 10.5V)..... 1.35Ah
 1 hour rate (1.09A, 9.6V)..... 1.09Ah
 Internal Resistance
 Fully Charged battery 77°F(25°C)..... 125mOhms
 Self-Discharge
 3% of capacity declined per month at 20°C(average)
 Operating Temperature Range
 Discharge -20~60°C
 Charge -10~60°C
 Storage -20~60°C
 Max. Discharge Current 77°F(25°C)24A(5s)
 Short Circuit Current 80A
 Charge Methods: Constant Voltage Charge 77°F(25°C)
 Cycle use 14.5-14.9V
 Maximum charging current 0.64A
 Temperature compensation -30mV/°C
 Standby use 13.6-13.8V
 Temperature compensation -20mV/°C

Discharge Constant Current (Amperes at 77°F25°C)

| End Point Volts/Cell | 5min | 10min | 15min | 30min | 1h | 3h | 5h | 10h | 20h |
|----------------------|------|-------|-------|-------|------|------|------|------|------|
| 1.60V | 6.36 | 4.17 | 3.26 | 1.69 | 1.09 | 0.43 | 0.29 | 0.16 | 0.09 |
| 1.65V | 6.03 | 3.97 | 3.12 | 1.62 | 1.05 | 0.41 | 0.29 | 0.16 | 0.08 |
| 1.70V | 5.69 | 3.77 | 2.97 | 1.55 | 1.01 | 0.40 | 0.28 | 0.15 | 0.08 |
| 1.75V | 5.33 | 3.56 | 2.82 | 1.47 | 0.97 | 0.38 | 0.27 | 0.15 | 0.08 |
| 1.80V | 4.98 | 3.34 | 2.66 | 1.39 | 0.92 | 0.37 | 0.26 | 0.15 | 0.08 |

Discharge Constant Power (Watts at 77°F25°C)

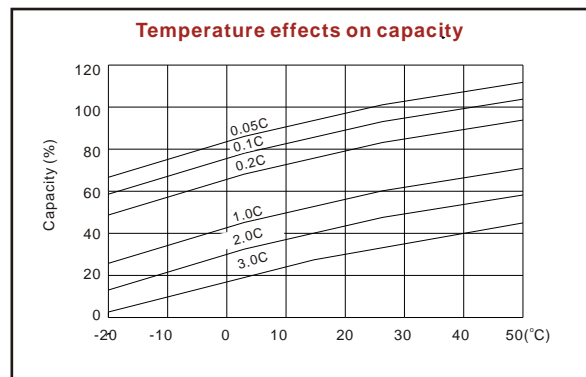
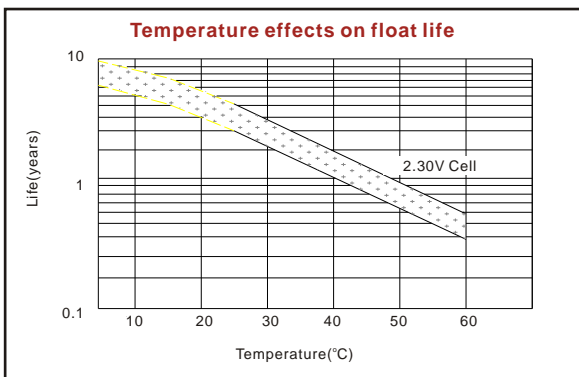
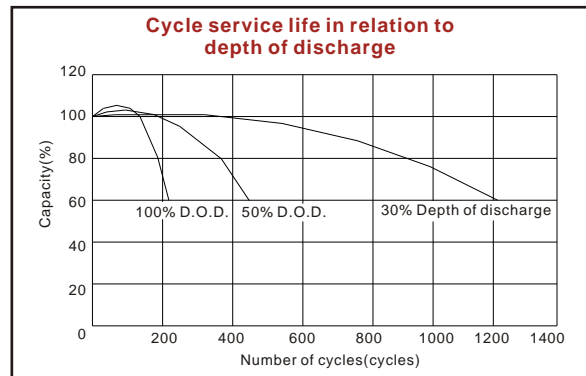
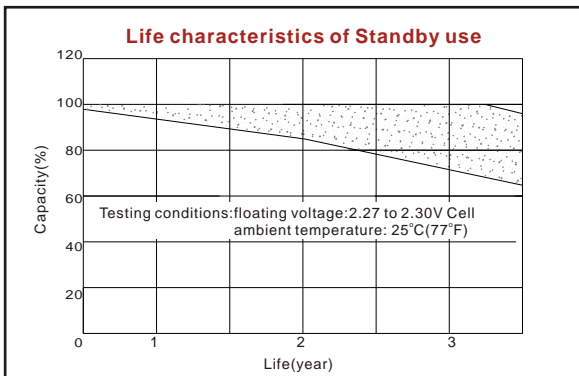
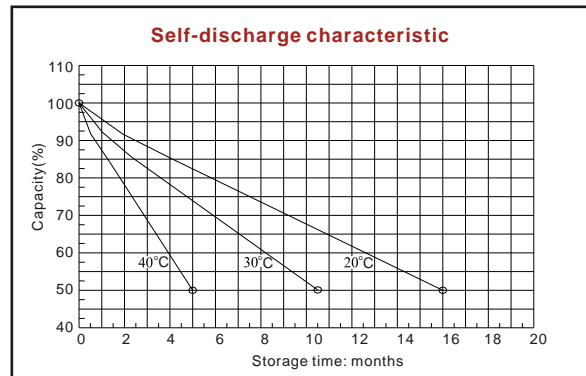
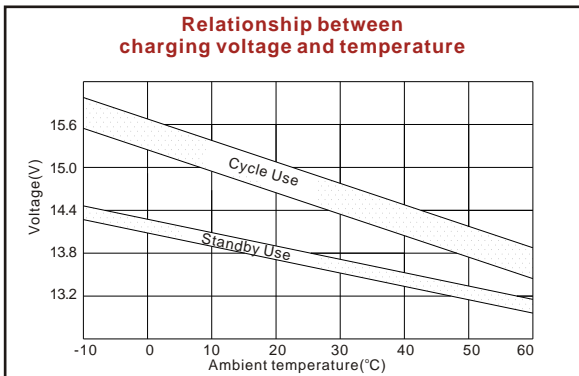
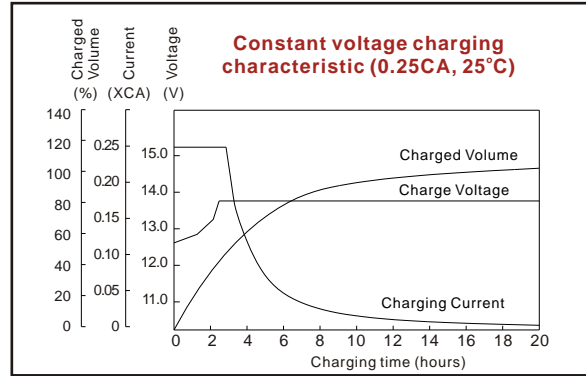
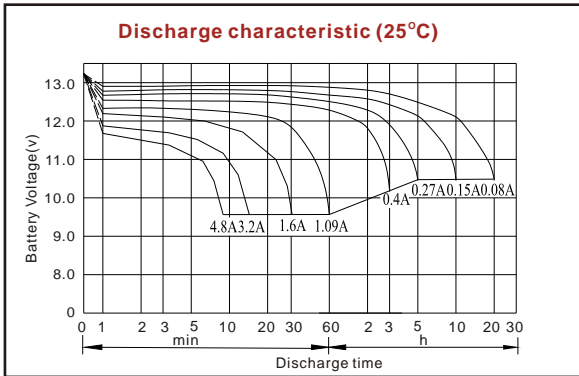
| End Point Volts/Cell | 5min | 10min | 15min | 30min | 45min | 1h | 2h | 3h | 5h |
|----------------------|-------|-------|-------|-------|-------|------|------|------|------|
| 1.60V | 11.80 | 8.11 | 6.26 | 3.35 | 2.55 | 2.05 | 1.19 | 0.87 | 0.59 |
| 1.65V | 11.30 | 7.76 | 6.03 | 3.23 | 2.46 | 1.99 | 1.15 | 0.83 | 0.59 |
| 1.70V | 10.70 | 7.41 | 5.77 | 3.11 | 2.38 | 1.92 | 1.12 | 0.82 | 0.57 |
| 1.75V | 10.10 | 7.04 | 5.51 | 2.98 | 2.29 | 1.86 | 1.08 | 0.78 | 0.56 |
| 1.80V | 9.45 | 6.64 | 5.21 | 2.83 | 2.18 | 1.77 | 1.04 | 0.76 | 0.54 |

(Note)The above characteristics data are average values obtained within three charge/discharge cycles not the minimum values.



VISION

CP1220M 12V1.6Ah



ISO9001:2000

MH25860

G4M19906-9202-E-16

www.vision-batt.com

Shenzhen Center Power Tech. Co., Ltd.
 Center Power Industrial Park, Tongfu Industrial District Dapeng Town, 518120 Shenzhen, China
 Tel: (+86-755) 8431 8088 Fax: (+86-755) 8431 8038 E-mail: sales@vision-batt.com